

Appropriate Containers for Flower Arrangements and Planters



4SC—5" CUP-BOWL—2.50



F34—8" RICE BOWL—2.50



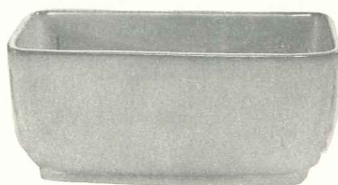
4XL—7" BOWL—2.00



6N—7½" BOWL—2.50



15—12" PLANTER—5.00



14—8" PLANTER—3.00



59—CANTEEN/W HANGER—3.00



45—12" OBLONG PLANTER—4.00



NOT AVAILABLE
IN FLAME

F30AB—PITCHER & BOWL SET—5.00

F30A—5½" PITCHER—3.50

F30B—7" BOWL—1.50



40AB—PITCHER & BOWL SET—3.50

40A—4" PITCHER—2.25

40B—5" BOWL—1.25



228—8" SWAN PLANTER—3.50



208A—9½" MALLARD PLANTER—3.50



208—12" MALLARD PLANTER—5.00



913—9" DUTCH SHOE PLANTER—2.50



433—BOOT BOOKENDS—10.00 pr.



133—6½" BOOT VASE—2.50



134—4" BOOT—1.50